



## 6" Smart Valve Cut Sheet

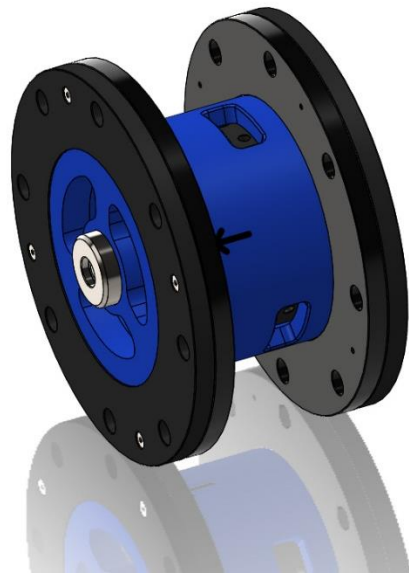
### Materials

Acetron GP

Stainless Steel

Aluminum (flange – no water or pipe contact)

FDA approved internal o-rings



### Certifications

NSF 61 (potable water)

NSF 372 (lead free)

Certifying laboratory: IAPMO R&T

### Installation Dimensions

#### **6" SMART VALVE:**

Body Length – Flange to Flange	7.82"
Bolt Pattern	Standard
Bolt Holes	Through Holes
Shipping Weight	28 lbs

For best results install the Smart Valve downstream of water meter and backflow preventer (if present), but before any other valves or equipment such as a pressure reducer or booster pump. Where *possible* it is recommended (but not critical) to have 10 diameters of straight pipe before and after the valve. All flanged installations to use gaskets at each flange.

**IMPORTANT:** If the pipe the Smart Valve is being installed in is used as a Ground Fault Line, The Smart Valve will NOT conduct a current through the pipe without a grounding strap. As a precaution, ALWAYS use a ground strap across the valve from pipe to pipe.